

Case Study

A FOCUS ON IMO PRODUCT IN APPLICATION

SD1 & iView

Engineering Education Solution



www.imopc.com

SD1 & iView

Engineering Education Solution

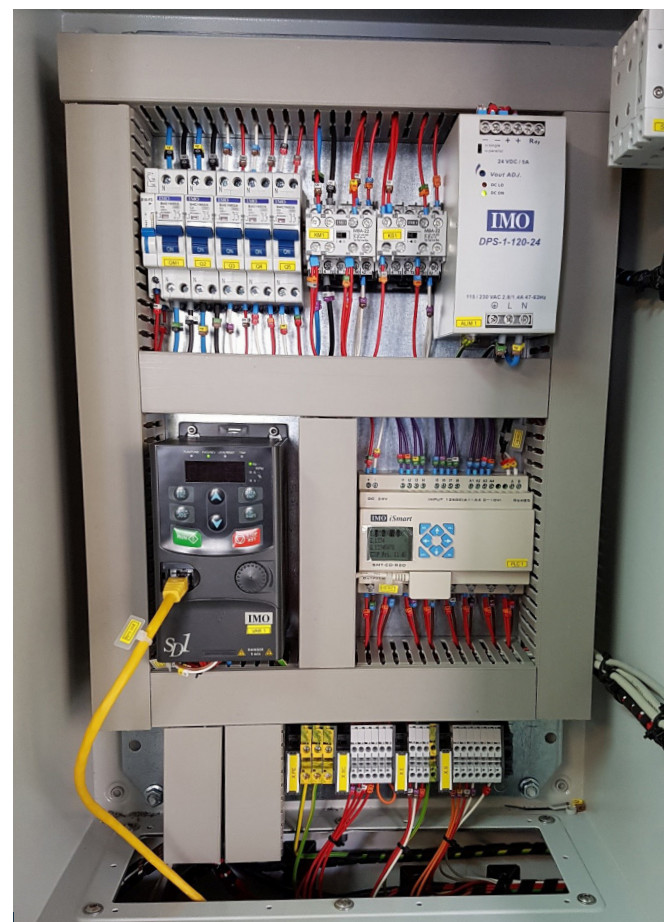


The customer - a French Technical School of Engineering - had a requirement for a range of products to construct their student teaching machine. The teaching machine needed to be fully functional in order to train students on the programming of various industrial automation products including Human Machine Interfaces (HMI), Programmable Logic Controllers (PLC) and AC Variable Speed Drives.

Additional to providing programming training, the teaching machine was designed to aid in the diagnosis of faults, in order for the student to be qualified for servicing a defective machine.

The customer approached a local integrator who opted for IMO products as much as possible in order to keep his pricing low, and allowing him to be as competitive as possible in such a tough marketplace. The ease and scope of programming on the iView and iSmart were significant contributing factors for opting for IMO.

The huge array of IMO products used included the SD1 Variable Speed Drive for AC Motors with a remote keypad for mounting in the panel control board, an iView Advanced HMI, iSmart Intelligent Relay, DPS Power Supply, Mini Contactors, Miniature Circuit Breakers, DIN Rail Terminals, Sensors, Pushbuttons and Pilot Lights. The end product was designed so that all of the I/Os are accessible from the front of the panel for easier diagnosis and debugging for the students.



“

We are very happy with the final machine and the features and functionality provided for our students. As an educational organisation we had a very limited budget, but the integrator was able to provide a solution which came in under budget, and was completed and installed in our School of Engineering labs exactly to our feature and functional specifications. Offering our students an imitation of a real working machine is very important to their successes as future engineers

Course Leader, School of Engineering

”